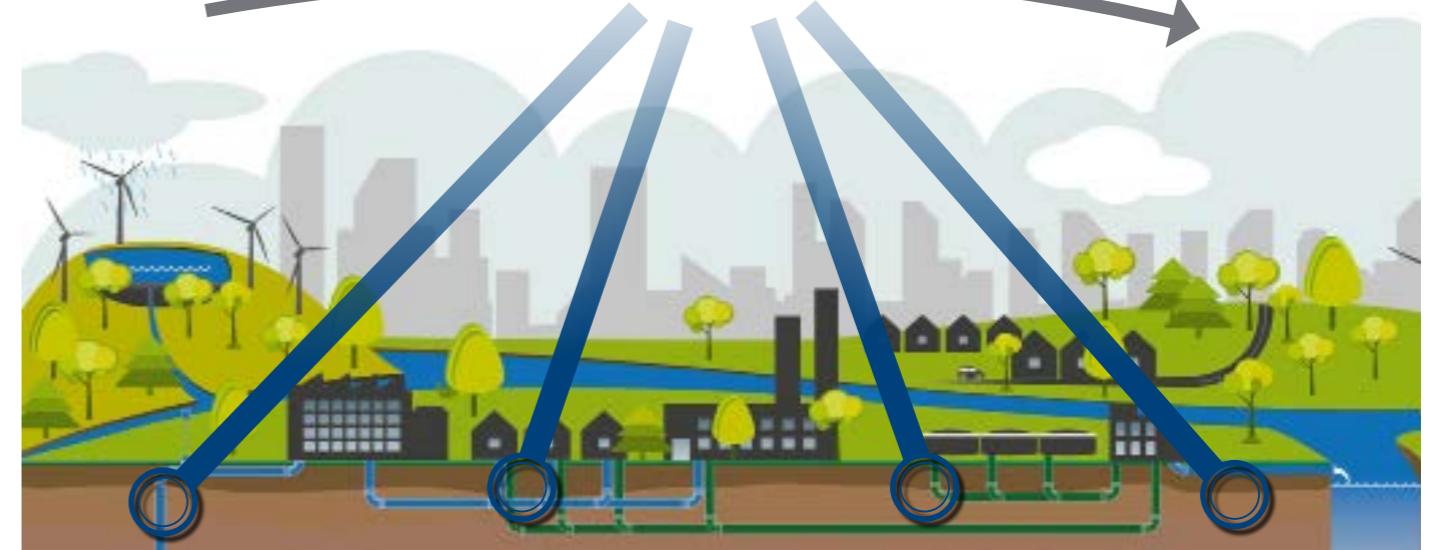


WaterNet

Collect robust, accurate and detailed data with a tool designed for the Water Industry - by experts in the Water Industry.



Water Management



Catchment Management



Water Cycle Management

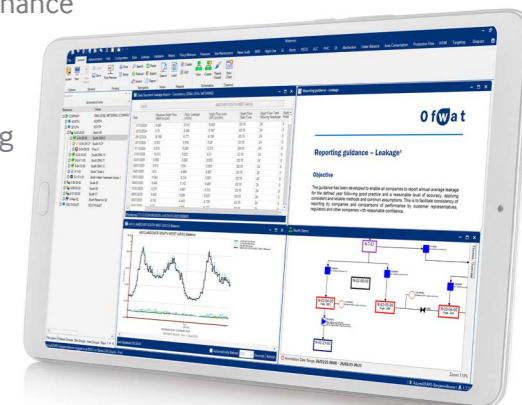
Water Management:

- Regulatory
- Levels of Service
- Leakage Analysis
- Consumption Reporting
- Operability
- Asset Planning
- Design
- Maintenance
- SELL
- Water Balance

Modular Solutions

Catchment Management:

- Regulatory
- Catchment Status
- Pumps and Works Performance
- Pro Active Maintenance
- Asset Planning
- CSO Monitoring
- Infiltration
- Incident Reporting
- SWEAR
- SUD'S



Water Cycle Management

Significant challenges are being placed on Utility Companies to provide robust, accurate and complete data. New legislation and industry-standard methodologies have developed, such as:

Common Framework for Capital Maintenance Planning;

- Distribution, Operation and Maintenance Strategies (DOMS);
- Water Framework Directive etc.

This all leads to the requirement for a more quantitative, systematic, risk-based and auditable approach that converts raw data into easily-accessible and digestible information.

RPS WaterNet has been developed to meet this challenge.

The Benefits

RPS WaterNet gives Managers and Practitioners:

- **Faster access** to fully integrated asset information.
- **Transparency** of asset performance and operability.
- **Better understanding** of levels of service.
- A common reporting standard.
- The ability to “**drill down**” from high-level reports.
- Greater comprehension of capital maintenance and operational costs.
- Corporate Level “**Dashboard**” of critical information.
- Access to **built-in functionality** developed from industry best practice and research.
- **Full security and auditability** of data and reported outputs.



“12 water companies across the UK use WaterNet for their leakage management calculations, helping them reduce leakage – this equals over 200 Mld (megaliters per day) between 2017-18 and 2019-20, the equivalent of 80 Olympic-sized swimming pools. This is a significant cost reduction in protecting our natural resources and meeting regulatory and customer expectations.”

Dr Joe Sanders, Senior Technical Director, RPS

RPS WaterNet is a spatial asset management reporting and analysis tool typically used for the regulatory reporting of leakage and sewer flooding. It integrates and validates data from a number of key corporate datasets and applies diagnostics to provide tabular, graphical and spatial reports that align with the reporting requirements of regulators.

For further information contact:

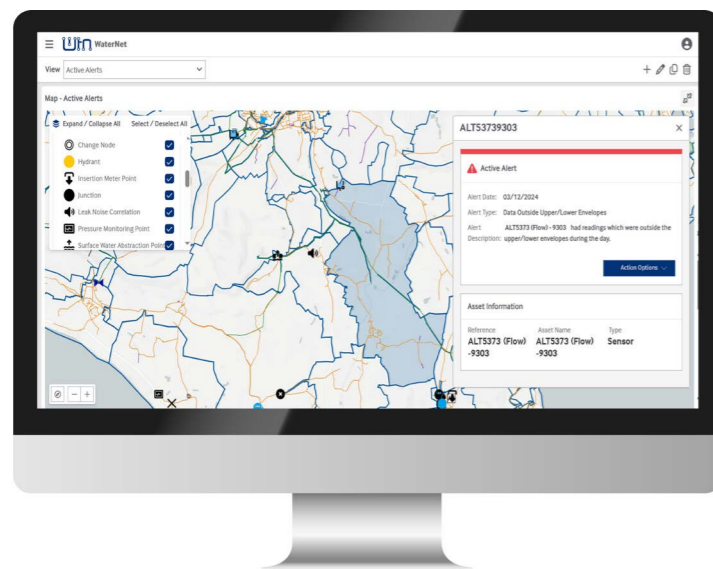
Michael Hurley

Technical Director

T: +44 1273 858 223

E: michael.hurley@tetrattech.com

RPS, a Tetra Tech Company
6-7 Lovers Walk,
Brighton,
East Sussex,
BN1 6AH



www.waternet.uk

WaterNet