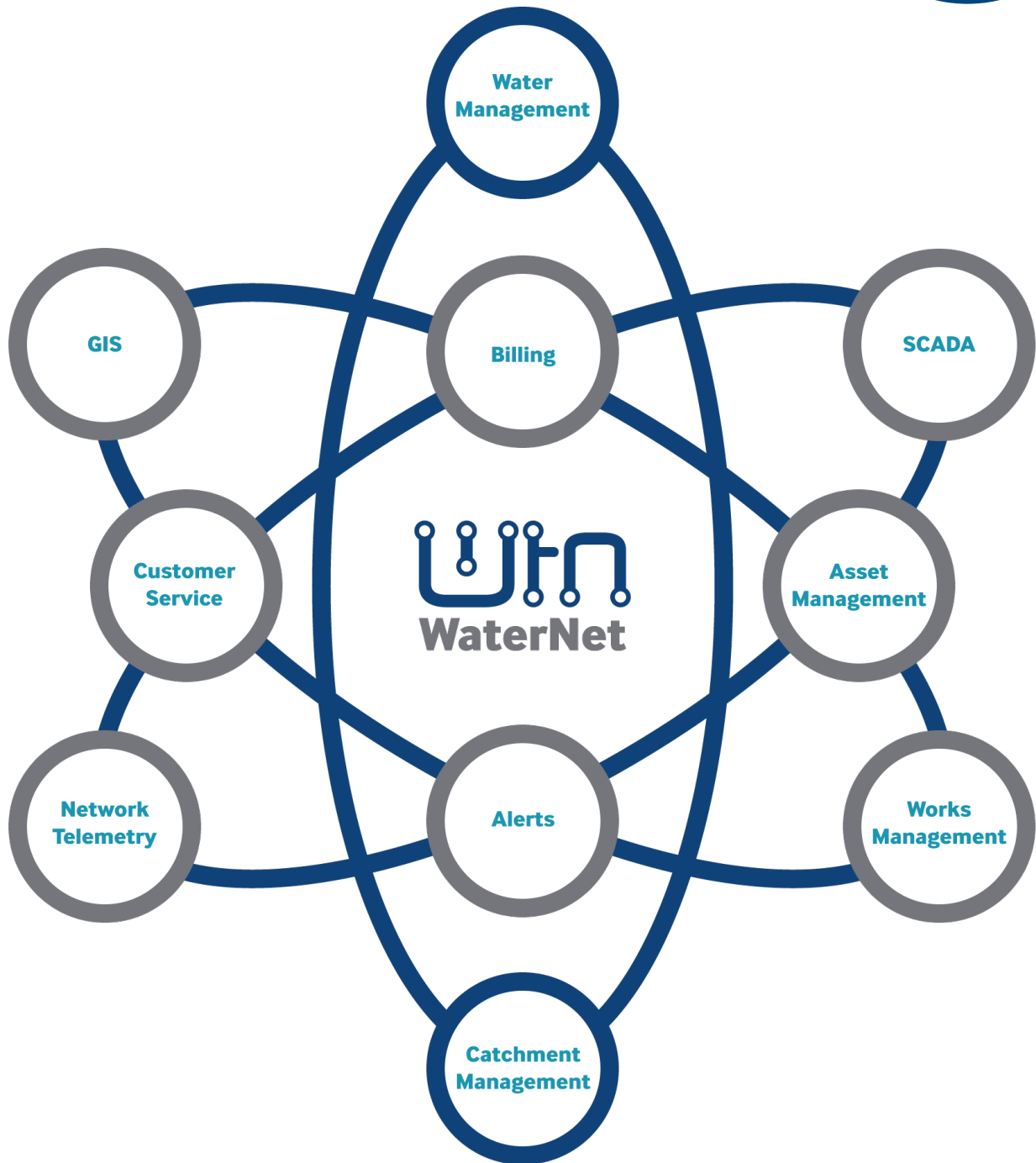


WaterNet

Collect robust, accurate and detailed data with a tool designed for the Water Industry - by experts in the Water Industry.



www.waternet.uk

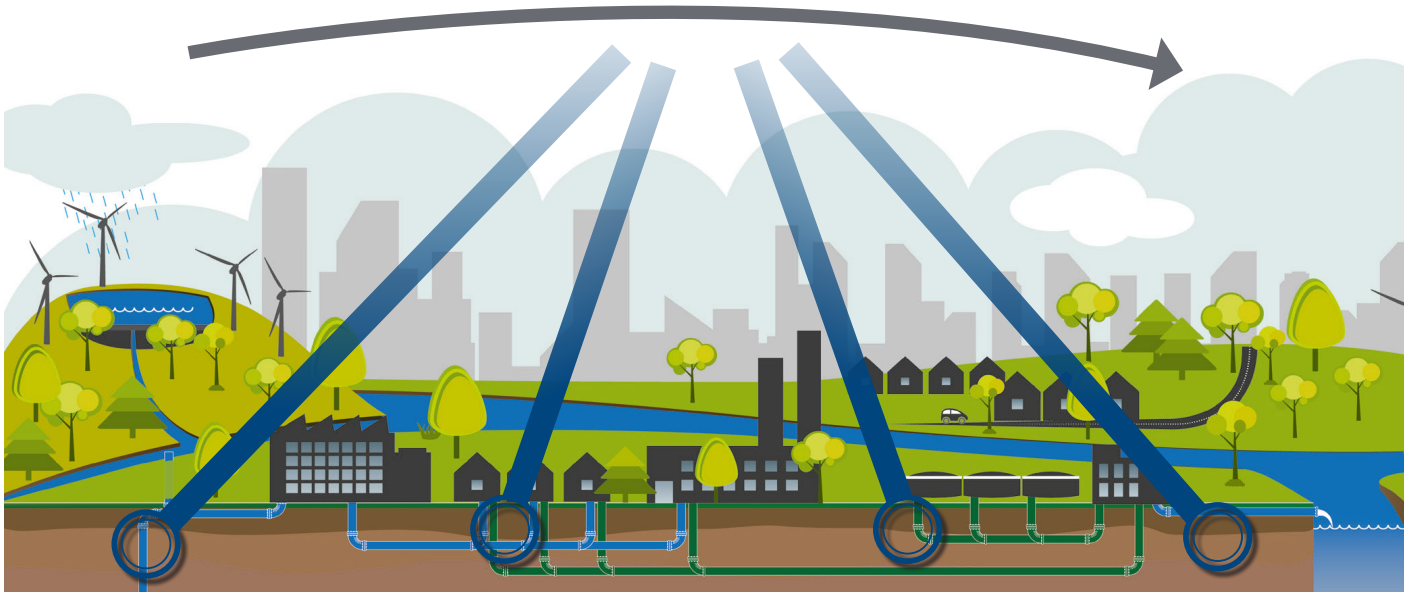
GIS

SCADA

Billing

Customer Service

Water Management



Catchment Management

Network Telemetry

Works Management

Alerts

Control Systems

Water Cycle Management

Water Management:

- Regulatory
- Levels of Service
- Leakage Analysis
- Consumption Reporting
- Operability
- Asset Planning
- Design
- Maintenance
- SELL
- Water Balance

Catchment Management:

- Regulatory
- Catchment Status
- Asset Planning
- Pro Active Maintenance
- CSO Monitoring
- Infiltratio
- Incident Reporting
- Pumps and Works Performance
- SWEAR
- SUD'S

Modular Solutions



Water Cycle Management

Significant challenges are being placed on Utility Companies to provide robust, accurate and complete data. New legislation and industry-standard methodologies have developed, such as:

Common Framework for Capital Maintenance Planning;

- Distribution, Operation and Maintenance Strategies (DOMS);
- Water Framework Directive etc.

This all leads to the requirement for a more quantitative, systematic, risk-based and auditable approach that converts raw data into easily-accessible and digestible information.

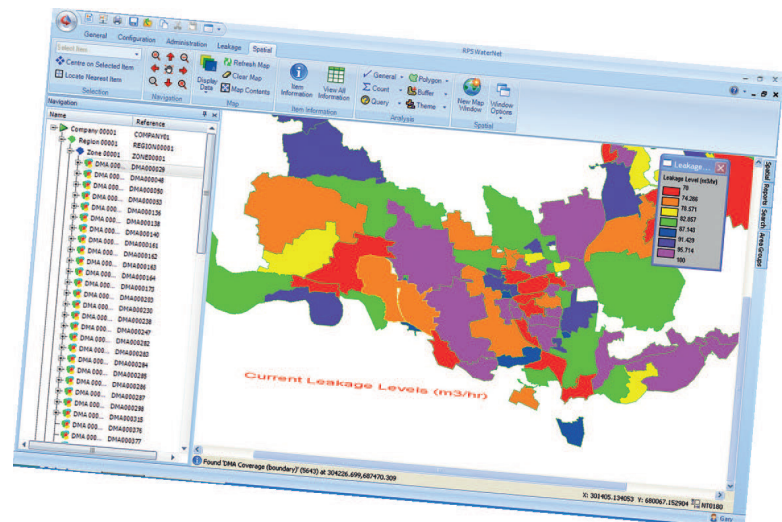
RPS Waternet™ has been developed to meet this challenge.



The Benefits

RPS Waternet™ gives Managers and Practitioners:

- Faster access to fully integrated asset information.
- Transparency of asset performance and operability.
- Better understanding of levels of service.
- A common reporting standard.
- The ability to “drill down” from high-level reports.
- Greater comprehension of capital maintenance and operational costs.
- Corporate Level “Dashboard” of critical information.
- Access to built-in functionality developed from industry best practice and research.
- Full security and auditability of data and reported outputs.



“Waternet is a key part of our strategy to help us achieve our customers’ expectation of significantly reducing leakage. Working with RPS, we have been able to develop a system that is functional, easy to use and fits our ever growing leakage data requirements.”

Ian Alexander, Leakage Verification Manager, Leakage Operations,
Affinity Water Ltd.

RPS Waternet™ is a spatial asset management reporting and analysis tool typically used for the regulatory reporting of leakage and sewer flooding. It integrates and validates data from a number of key corporate datasets and applies diagnostics to provide tabular, graphical and spatial reports that align with the reporting requirements of regulators.
For further information contact:

Michael Hurley - Technical Director
T: +44 1273 858 223
E: michael.hurley@rps.tetrattech.com

RPS, a Tetra Tech company
6-7 Lovers Walk,
Brighton,
East Sussex,
BN1 6AH



www.waternet.uk